

Welcome to London !

■ Jobs ■ Stages ■ Accommodation ■ Assistance ■ School of English ■

JOB Centre - The Employment Service since 1987

- Our services are available all year round.
- You determine the length of your stay, that can be unlimited.
- We are able answer all your requests promptly.
- We are top in London for price and quality, (you are welcome to compare)
- You can pre-book your stay or drop in our office (Mon/Fri 10 a.m./6 p.m., as long as it is not during week ends or on bank holidays.
- Reservation is required only for the period starting from 1st of July until 15th of August.
- To guarantee a more successful stay we recommend you come during the months of March, April, May, September and November
- We are able to satisfy all your requirements within the services explained in our documentation.

How to get a JOB in London

- All EU nationals who are 17 or over have the right to work in the UK. EU citizens can work in Great Britain without any visa. Commonwealth citizens have limited rights (contact the British Embassy in your country).
- Everyone else can obtain a partime working VISA from the British Authorities if the reason of is visit is study (6 months minimum).
- The length of time that it takes to find a job depends on the time of the year, knowledge of the English language, experience and personal motivation. Most of the times you can find a job within 48 hours of your arrival in London. Those who have less experience or are looking for a particular kind of job might have to wait longer. During the peak summer months (July and August) it is more difficult and it takes slightly longer to find a job. To succeed in summer it is necessary to follow our instructions carefully.
- Departures can be arranged in a very short time. Those who apply today could be settled in London in 48 hours.
- Employment in London will be immediate for professionals.
- n Those who already have experience will find interesting offers as soon as they arrive. And those who stay in London for a long time will gain more experience and will see their income grow considerably.
- At the beginning those who do not have any experience will find a simple job that doesn't require any specific experience and if they speak English they might be employed in a shop or as a receptionist in a hotel.



LONDONJOB

has been operating in
London since 1990

EUROAGENCY

23 Haymarket
(Piccadilly Circus)
London - SW1 Y 4DG
Great Britain

www.londonjob.net

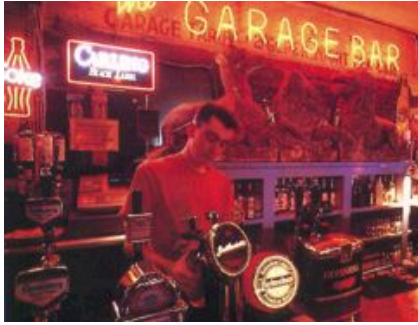
100 m. from Underground Station (Piccadilly Circus)



LONDONJOB- First floor - II^o floor - III^o floor



Job



Free-employment service

Provided you meet the requirements set out in the list of jobs, you can apply for employment. By return of post, the agency will write to confirm your date of arrival (if you can't find a flight on that day, we can always arrange to delay your start date by a few days).

Our Professional Service

Enables you to open a bank account immediately. Ensures that you immediately have British welfare and medical cover. - Our members receive a year-long ongoing service and mailbox facilities; they can enrol in language schools and use several travel agencies with whom we have special agreements, and, of course, our job training and accommodation service.

1. With or without English

(Position & Weekly pay net in £ GB + food)

- Trainee waiter - from £.130 to £.260 weekly pay
- Trainee waitress - from £.130 to £.260 weekly pay
- Fast food staff - from £.110 to £.240 weekly pay
- Chambermaid - from £.100 to £.240 weekly pay
- Washer up - from £. 130 to £.230) weekly pay
- Kitchen porter - from £. 130 to £.290) weekly pay

2. Some English and some work experience

(Position & Weekly pay net in £ GB + food)

- Pub assistant - from £.140 to £.320 weekly pay
- Waiter/waitress - from £.140 to £.400 weekly pay
- Assistant cook - from £.145 to £.500 weekly pay
- pizza chef - from £.145 to £.600 weekly pay
- Barman/barmaid - from £.140 to £.500 weekly pay
- Pastrycook - from £.150 to £.600 weekly pay

3. Good English, experience

(Position & Weekly pay net in £ GB + food)

- Receptionist - from £.130 to £.650 weekly pay
- Shop Assistant - from £.130 to £.400 weekly pay
- Manager/ess (Negotiable)
- Chef 1°-2°-3° (According to about our experience)

Accommodation



London is Europe's coolest, but most expensive city in Europe. Accommodation is two times more expensive than in Berlin, and four times more expensive than in Madrid. We find cheap, centrally located accommodation for our members who come London to work, study, or simply to see the sights. Independent or family accommodation The "sharing" option provides cheap accommodation. If you're on your own, we can find you room mates. We can easily obtain accommodation for couples or friends to share.

Our members receive ongoing assistance, including security and maintenance (plumbing, etc.) services, and are entitled to change their accommodation if they wish. Accommodation is furnished and fully equipped.

The price shown near are special rates for our members, and very cheap in London.

● **Shared Room (Minimum stay 2 weeks):**

- a) First Two Weeks: from £ 195 to £ 215 per weeks
- b) The following weeks: from £ 80 to £ 100 p.week

● **Single Room (Minimum stay 2 weeks):**

- a) First Two Weeks: from £ 220 to £ 240 per weeks
- b) The following weeks: from £ 105 to £ 115 p.week

WE ALSO PROVIDE

- **Studios:** from £ 180 to £ 240 per week
(with kitchen and shower x two people)

Payment: You are required to pay the basic amount (two first weeks including full membership valid 1 year, professional agency, registration fee, general assistance, etc.) in two times. An advance (£ 135) when you register, the difference once in London.

P.S. A deposit of £ 80 is required for all kind of accommodation. Your deposit we'll be returned at the moment you leave, according with the CONTRACT.

English Language School



We offer our members a professional and recruitment advisory service. Also available to our members is an accommodation service providing homes in central London areas:

See webpage: <http://www.londonjob.net>

● To book your English course simply tick the course you wish to follow on the enrolment form. A deposit of £20 is payable on all courses, and will be deducted from the total fee payable to the school. This will entitle you to start your course on the required date, and prevent you from having to wait for a later course because of over-booking. Courses can be coordinated to fit in with your work schedules.

● If you are not an EU citizen, or if you don't have a Working Holiday Certificate (for Commonwealth citizens under the age of 27) by being registered at a British school you can obtain a partial work permit. See www.londonjob.net

● If you are an UE citizen you do not need a visa or a work permit as you are automatically given the right to work and stay for any length of time.

JOB SUPPORTING



LONDONJOB

23 Haymarket (Piccadilly Circus) London - SW1 Y 4DG Great Britain

valid for one year from the date of your arrival

Assistance for those staying or working in England once or more than once. It is valid for one year and the service may be called upon again without incurring further costs.

It guarantees the following services:

Social Security

● On arrival the member of staff responsible will provide you with all the necessary information for obtaining English fiscal identity (the NATIONAL INSURANCE NUMBER), which is indispensable if one wishes to enjoy British Social Security.

● Anyone who wants to spend time working in England or wishes to reside there for long periods, without at the same time losing the rights granted to any European citizen will not find any difficulty whatsoever.

● Citizens from any EEC country, on arriving in England and making a simple application will receive the National Insurance Number and Social Security card which is indispensable as it is accepted at work, is needed for opening a bank account and for other uses.

● Staff at Network London U.K. will help you to save a lot of time in getting the details settled: they will give you instructions, the procedures to follow, the address of the office that you have to apply to (this depends on the area of London in which you are living). You will receive your card by post within a few days.



Your Social Security Number will enable you to do the following:

● Satisfy legal requirements regarding British working laws, thus avoiding unpleasant misunderstandings.

● Ensure that your employer pays your National Insurance contributions. These contributions can eventually be calculated for your pension when the moment comes.

● You will be entitled to unemployment benefits in the event of losing your job for reasons beyond your control: redundancy, closing of premises, etc. (you will be able to

receive them within a week of being made redundant if your claim is in order).

● At the end of your stay in England, and if you have worked for more than six consecutive months (even if you have changed jobs), you may decide to withdraw at the office indicated the whole amount of money paid to Social Security in your name by your employer.

Medical Assistance

Help and assistance for qualifying for treatment under the British National Health Service.

With the free membership of the National Health Service (and this, too, is indispensable both for those wishing to work and for those planning to spend some time in England or to make regular visits), you will be able to enjoy the same services as those enjoyed in your own country in similar circumstances (admission to hospital, doctors visits, treatment, etc.)

Depending on the type of illness, Health Insurance will cover the cost totally or partially. Staff at Network London U.K. will explain the formalities required in order to choose your own doctor, and if required, a doctor who speaks your own language.



Job in London

London is a city of infinite resources which is daily teeming with tourists who arrive from every corner of the world.

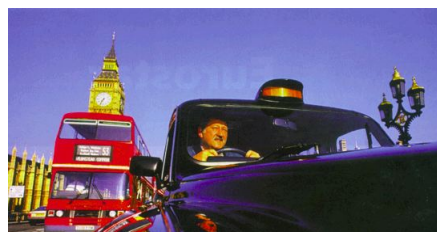
For many decades it has become the custom for hordes of young people from every country to descend on London and spend a few months living there with the aim of improving their knowledge of English - occasionally starting from scratch - and taking advantage of the opportunity of enjoying one of life's most unique and fullest experiences.

All these factors combine inevitably to create a situation where the city has become very flexible especially with regards to an ever-available roster of job possibilities. Managers in London know perfectly well how to take advantage of this situation which is unique in Europe.

Thousands of young people, students and non-students, love to spend a few months in the English capital, paying for their board and lodgings by working in pubs, hotels and restaurants.

This means that it is possible for other young people who wish to follow in their footsteps to find jobs available as soon as the others have returned from their experiences to their own countries.

The English mentality and the social (class) structure of London tend to mean that the English occupy the more managerial appointments or work free-lance; otherwise, if



they are employed in the main work-force, the British generally work in offices or on building sites. They rarely work in tourism. This makes it possible for young people from all over Europe to find work in the tourist sector.

It is possible, for those who are willing, to work in London for as long as one wishes, starting from a minimum period of four weeks. Whoever applies to an expert and organized body such as ours has very good chances and should be able to achieve his or her very goal in a very short time. He or she will certainly have a great advantage over those who get to London and try to embark on this "adventure" without help.

People arriving in London alone will find



themselves forced to go through the harrowing process of going "from door to door" in search of work; this, apart from dulling one's initial enthusiasm, tends to be expensive and eats into one's daily budget. (Living expenses while one is waiting, transport and so on).

If you avail yourselves directly of our professional guidance facilities - we are in daily contact with hundreds of employers - you will receive efficient and on-going assistance which has been attested to by positive results consistently obtained over the years.

Moreover, you can arrange with us your date of arrival in London. This will be decided in accordance with your own personal programme needs, with the job situation in London, and the percentage of predicted job opportunities for the period you yourself have chosen. Generally there are no difficulties in accepting the date that you yourself have chosen for your arrival in the English capital. Finally, and this is of equal importance, you will not be left completely on your own in a foreign city; you will enjoy the (meaningful/considerable) important support of our organization - NETWORK LONDON U.K. (comprising HOUSING ASSISTANCE and JOB SUPPORTING) - which will be taking care of the little things, undertaking rigorously to see to your finding the professional position that you are seeking. NETWORK LONDON U.K., the back-up service that you will be calling upon, has been operating since 1987.

Job & English School for non European-citizens

Welcome Package

This package includes: full time English courses (15 hours weekly) accommodation, professional assistance (Job) etc.

It is essential for non EU-citizens and especially tailored for those whom learning English is a priority.

See webpage:

<http://www.londonjob.net>

Application Form

■ Contacts ■ Jobs ■ Stages ■ Accommodation ■ Assistance ■ School of English ■

Please indicate: If you require all our services. If you only require accommodation. If you require a language school and accommodation. An advance of £135 - sterlings - should be paid when you register if you desire to book your accommodation. This advance we'll be reduced from the total amount due. If you want just the professional assistance or the language school only, please contact us by e-mail

- 1. Your deposit may be paid by postal order to:
Londonjob - 23 Haymarket , LONDON SW1 4DG - England
- 2. If you choose to pay by credit card, please fill-up the form in www.londonjob.net
or call from your country **0044- 20 - 79300323 or 79300331 for direct privacy service**
- 3. If you prefer to pay by bank transfer please make payment :
 - to: **Londonjob**
 - account number: **00236678**
 - Bank: **The ROYAL BANK of SCOTLAND**
 - Address: **London Piccadilly Circus Branch - 48 Haymarket, LONDON SW1 4DG - England**
 - sort code (branch code): **16 - 0083**

and send copy of the payment order enclosed the application form to:
Londonjob - 23 Haymarket , LONDON SW1 4DG - England



NAME: _____

SURNAME: _____

Date of Birth: | | | | Sex: _____

Address: _____

Postal Code: _____ Town: _____

Country: _____ Nationality: _____

Phone number:(optional) _____

Fax number:(optional) _____

e-mail:(optional) _____

date of Arrival (approximately) | | | |

comments (optional) _____

TYPE of ACCOMMODATION Required

• Long let (how long you would like to stay):

- Sharing Room
- Single Room
- Studio flat

• Short let (less than 15 days):

- Sharing Room
- Single Room
- Studio flat

WOULD YOU LIKE TO WORK IN LONDON ?

Job Category _____

Work experience _____

Knowledge of English Language _____

You may enclose your CV if you've got a recent one ready

DO YOU WANT AN ENGLISH COURSE ?

N° of weeks

N° of Hours x week

Where did you hear about us:
